

PROFESSIONAL INSECT CONTROL  
Roach Killer Bait Gel

**Maxforce**

BAYER

RECYCLED PAPERBOARD MINIMUM 35% POST CONSUMER CONTENT

**Maxforce**

PROFESSIONAL INSECT CONTROL  
Roach Killer Bait Gel

BAYER

FOR USE IN COMMERCIAL, INDUSTRIAL AND RESIDENTIAL AREAS

**ACTIVE INGREDIENT:**  
Hydramethylnon; tetrahydro-5, 5-dimethyl-2(1H)-pyrimidinone, (3-(4-(trifluoromethyl) phenyl)-1-(2-(4-(trifluoromethyl) phenyl) ethoxy)-2-propoxy)ethyl triazole..... 2.15%  
ethionyl 2-propoxyethyl triazole..... 97.85%

**OTHER INGREDIENTS:**..... 100.00%

**TOTAL:**..... 100.00%

EPA Reg. No. 432-1254 EPA Est. No. 071106-GA-003

**KEEP OUT OF REACH OF CHILDREN AND PETS.**  
**CAUTION**

USE ONLY IN AREAS NOT EASILY ACCESSIBLE TO CHILDREN AND PETS.  
See back and side panels for complete Precautionary Statements, Hazards, Directions for Use and additional instructions.

Contents: 4 Reservoirs  
30g (1.05 Oz) each  
Total Net Weight: 120g (4.2 Oz)

Contains 4 pre-filled reservoirs for use with the MAXFORCE Bait Injector

79671172  
80227930A 090429AV2

**FIRST AID**

**IF ON SKIN :**

- Wash off contaminated clothing.
- Rinse skin immediately with plenty of water for 15-20 minutes.
- Call a poison control center or doctor for treatment advice.

Have the product container or label with you when calling a poison control center or doctor or going for treatment. You may also contact 1-800-334-7577 for emergency.

**Maxforce**

PROFESSIONAL INSECT CONTROL  
Roach Killer Bait Gel

BAYER

**IMPORTANT: READ BEFORE USE**  
SPECIAL, FEDERAL OR CONSEQUENTIAL DAMAGES RESULTING FROM THE USE OR MISUSE OF THIS PRODUCT ARE DISCLAIMED. THE LIMITATIONS OF LIABILITY, THE EXTENT OF WHICH IS LIMITED TO THE EXTENT CONSISTENT WITH APPLICABLE LAW, SHALL APPLY TO THIS PRODUCT. THE USER SHALL BE RESPONSIBLE FOR THE PROPER USE OF THIS PRODUCT. THE USER SHALL BE RESPONSIBLE FOR THE PROPER USE OF THIS PRODUCT. THE USER SHALL BE RESPONSIBLE FOR THE PROPER USE OF THIS PRODUCT.

**CAUTION**  
Harmful if swallowed or absorbed through skin. Causes moderate eye irritation. Avoid contact with eyes, skin or clothing.

**Personal Protective Equipment (PPE)**  
Gloves plus boots

**User Safety Recommendations**  
User should wash hands before eating, drinking, chewing gum, using tobacco or using the toilet. User should remove clothing/PPE immediately if pesticide gets inside. Then wash thoroughly and put on clean clothing. User should remove PPE immediately after handling this product. Wash the outside of gloves before removing. As soon as possible, wash thoroughly and change into clean clothing.

**GENERAL INFORMATION**  
**General Precautions and Restrictions**  
MAXFORCE Professional Insect Control Roach Killer Bait Gel may be used as a spot or crack and crevice treatment for the indoor and outdoor control of cockroaches in residential areas and the non-food/non-feed areas of institutional, warehousing and commercial establishments including warehouses, restaurants, food processing plants, supermarkets, hospitals, nursing homes, hotels, health facilities, laboratories, veterinary facilities, animal kennels, bus/train, boat/trains, pet shops and non-food/non-feed areas are areas such as garbage rooms, landfills, floor drains (to sewers), drains and ventstacks, offices, locker rooms, machine rooms, boiler rooms, garages, trap doors and storage after cleaning up. This product may also be used in food areas of food/feed preparation and prepared food holding surfaces as follows:

**APPLICATION INSTRUCTIONS:**  
It is a violation of Federal Law to use this product in a manner inconsistent with the labeling.

**Applications in Food/Feed Handling Establishments:**  
Application within food/feed areas of food/feed handling establishments is limited to crack and crevice treatment only. Apply with MAXFORCE Professional Insect Control Roach Killer Bait Gel directly directly into cracks and crevices. Place applicator tip 1/2 inch into cracks and crevices. Do not apply to areas where food/feed may be present. Apply small amounts of gel up to 1/2 gram per spot. Do not apply to areas where food/feed, food debris or food processing surfaces may become contaminated. Do not apply to areas that are routinely washed such as cracks and crevices in tops of tables, food/feed preparation and prepared food holding surfaces or walls that are routinely washed. Do not apply to surfaces where the temperature exceeds 130°F as bait may not be removed by washing. Do not apply to surfaces where the temperature exceeds 130°F as bait may not be removed by washing.

**PRECAUTIONARY STATEMENTS**  
**HAZARDS TO HUMANS AND DOMESTIC ANIMALS**  
**CAUTION**  
Harmful if swallowed or absorbed through skin. Causes moderate eye irritation. Avoid contact with eyes, skin or clothing.

**Personal Protective Equipment (PPE)**  
Gloves plus boots

**User Safety Recommendations**  
User should wash hands before eating, drinking, chewing gum, using tobacco or using the toilet. User should remove clothing/PPE immediately if pesticide gets inside. Then wash thoroughly and put on clean clothing. User should remove PPE immediately after handling this product. Wash the outside of gloves before removing. As soon as possible, wash thoroughly and change into clean clothing.

**GENERAL INFORMATION**  
**General Precautions and Restrictions**  
MAXFORCE Professional Insect Control Roach Killer Bait Gel may be used as a spot or crack and crevice treatment for the indoor and outdoor control of cockroaches in residential areas and the non-food/non-feed areas of institutional, warehousing and commercial establishments including warehouses, restaurants, food processing plants, supermarkets, hospitals, nursing homes, hotels, health facilities, laboratories, veterinary facilities, animal kennels, bus/train, boat/trains, pet shops and non-food/non-feed areas are areas such as garbage rooms, landfills, floor drains (to sewers), drains and ventstacks, offices, locker rooms, machine rooms, boiler rooms, garages, trap doors and storage after cleaning up. This product may also be used in food areas of food/feed preparation and prepared food holding surfaces as follows:

**APPLICATION INSTRUCTIONS:**  
It is a violation of Federal Law to use this product in a manner inconsistent with the labeling.

**Applications in Food/Feed Handling Establishments:**  
Application within food/feed areas of food/feed handling establishments is limited to crack and crevice treatment only. Apply with MAXFORCE Professional Insect Control Roach Killer Bait Gel directly directly into cracks and crevices. Place applicator tip 1/2 inch into cracks and crevices. Do not apply to areas where food/feed may be present. Apply small amounts of gel up to 1/2 gram per spot. Do not apply to areas where food/feed, food debris or food processing surfaces may become contaminated. Do not apply to areas that are routinely washed such as cracks and crevices in tops of tables, food/feed preparation and prepared food holding surfaces or walls that are routinely washed. Do not apply to surfaces where the temperature exceeds 130°F as bait may not be removed by washing. Do not apply to surfaces where the temperature exceeds 130°F as bait may not be removed by washing.

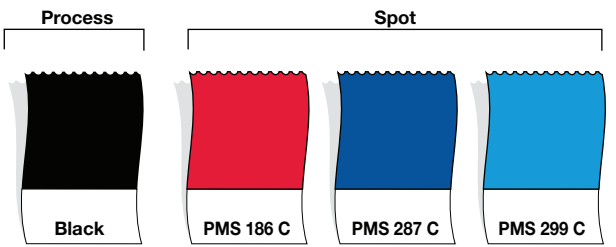
**SPECIES/LEVEL OF INFESTATION**  
MODERATE INFESTATIONS OR RETREATS FOR GERMAN OR BROWN-BANDED COCKACHES

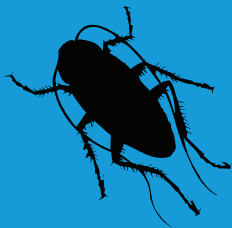
**APPLICATION RATE (PER SQ FT)**  
1/2 SPOTS ABOUT THE SIZE OF THE GEL STRONG CAP OR 1 1/2"-3" BEAD

**SEVERE OR HEAVY INFESTATIONS FOR GERMAN OR BROWN-BANDED COCKACHES**  
2-4 SPOTS ABOUT THE SIZE OF THE GEL STRONG CAP OR 3"-6" BEAD

**LARGE COCKACHES SUCH AS AMERICAN, SMOKY-BROWN OR ORIENTAL**  
(Actual size syringe cap) 1/2 COCKACHES/SPOT SIZE (1/4 - 1/2 g)

**STORAGE AND DISPOSAL**  
Do not contaminate water, food or feed by storage or disposal.  
**PESTICIDE STORAGE:** Store in original container in a cool, dry area out of reach of children. Keep container closed when not in use. Avoid contamination with other pesticides.  
**DISPOSAL:** If empty: Do not reuse this container. Place in trash or other recycling if available. If partly filled: Call your local solid waste agency for disposal instructions. Never place unused products down any indoor or outdoor drain.





# Maxforce®

## PROFESSIONAL INSECT CONTROL Roach Killer Bait Gel

FOR USE IN COMMERCIAL, INDUSTRIAL AND RESIDENTIAL AREAS

**ACTIVE INGREDIENT:**

Hydramethylnon; tetrahydro-5, 5-dimethyl-2(1H)-pyrimidinone,  
(3-(4-(trifluoromethyl) phenyl)-1-(2-(4-(trifluoromethyl) phenyl)  
ethenyl)-2-propenylidene) hydrazone..... 2.15%

**OTHER INGREDIENTS:**..... 97.85%

**TOTAL:**..... 100.00%

EPA Reg. No. 432-1254

EPA Est. No. 071106-GA-003

## KEEP OUT OF REACH OF CHILDREN CAUTION

USE ONLY IN AREAS NOT EASILY ACCESSIBLE TO CHILDREN AND PETS.

See back and side panels for complete Precautionary Statements,  
Hazards, Directions for Use and additional instructions.

Product may stain textiles and clothing.

FIRST AID	
IF ON SKIN :	<ul style="list-style-type: none"><li>• Take off contaminated clothing.</li><li>• Rinse skin immediately with plenty of water for 15-20 minutes.</li><li>• Call a poison control center or doctor for treatment advice.</li></ul>
Have the product container or label with you when calling a poison control center or doctor or going for treatment. You may also contact 1-800-334-7577 for emergency.	

**Contents: 4 Reservoirs**  
30g (1.05 Oz) each  
Total Net Weight: 120g (4.2 Oz)

Contains 4 prefilled reservoirs  
for use with the MAXFORCE  
Bait Injector

**79671172**  
80227930A 090429AV2



**Maxforce<sup>®</sup>**

**PROFESSIONAL INSECT CONTROL  
Roach Killer Bait Gel**

## PRECAUTIONARY STATEMENTS HAZARDS TO HUMANS AND DOMESTIC ANIMALS

### CAUTION

Harmful if swallowed or absorbed through skin. Causes moderate eye irritation. Avoid contact with eyes, skin or clothing.

### Personal Protective Equipment (PPE)

Applicators and handlers must wear,

-Shoes plus socks

Follow manufacturer's instruction for cleaning/maintaining PPE. If no such instructions for washables exist, use detergent and hot water. Keep and wash PPE separately from other laundry.

### User Safety Recommendations

User should wash hands before eating, drinking, chewing gum, using tobacco, or using the toilet. User should remove clothing/PPE immediately if pesticide gets inside. Then wash thoroughly and put on clean clothing. User should remove PPE immediately after handling this product. Wash the outside of gloves before removing. As soon as possible, wash thoroughly and change into clean clothing.

## GENERAL INFORMATION

### General Precautions and Restrictions

MAXFORCE® Professional Insect Control Roach Killer Bait Gel may be used as a spot or crack and crevice treatment for the indoor and outdoor control of cockroaches in residential areas and the non-food/non-feed areas of institutional, warehousing and commercial establishments, including warehouses, restaurants, food processing plants, supermarkets, hospitals, nursing homes, motels, hotels, schools, laboratories, computer facilities, sewers, "aircraft", buses, boats/ships, trains, pet shops and zoos. Non-food/non-feed areas are areas such as garbage rooms, lavatories, floor drains (to sewers), entries, and vestibules, offices, locker rooms, machine rooms, boiler rooms, garages, mop closets and storage (after canning or bottling). This product may also be used in food areas of food/feed handling establishments as outlined below.

### APPLICATION INSTRUCTIONS:

It is a violation of Federal Law to use this product in a manner inconsistent with its labeling.

Applications in Food/Feed Handling Establishments: Application within food/feed areas of food/feed handling establishments is limited to crack and crevice treatment only. Apply with MAXFORCE Professional Insect Control Roach Killer Bait Gel Injector directly into cracks and crevices. Place applicator tip 1/2 inch into cracks, crevices, holes and other small openings where roaches may be a problem. Apply small amounts of gel (up to 1/2 gram) per spot. Do not apply bait to areas where food/feed, food utensils or food processing surfaces may become contaminated. Do not apply bait to areas that are routinely washed such as cracks and crevices in tops of tables, food/feed preparation and prepared food holding surfaces as bait may be removed by washing. Do not apply bait to surfaces where the temperature exceeds 130°F as bait

may run. Examples include, but are not limited to, portions of stoves, ovens, grills, fume hoods, heat lamps, coffee urns, steam tables, toasters, fryers, dishwashers and hot water pipes. Care should be taken to avoid depositing gel onto exposed surfaces. If gel contacts an exposed surface, remove gel and wash exposed surface.

Food/feed areas include areas for receiving, storage, packing (canning, bottling, wrapping, boxing), preparing edible waste storage, and enclosed processing systems (mills, dairies, edible oils, syrups). Serving areas are also considered a food/feed area when food is exposed and facility is in operation.

Apply bait in small amounts between different elements of construction, between equipment and floors, openings leading into voids and hollow spaces in floors, walls, ceilings, equipment legs and bases, around plumbing pipes, doors and windows, behind and under refrigerator, cabinets, sinks, closets, stoves and other equipment where cockroaches hide. During follow-up visits inspect bait placements and reapply when necessary. Application of this product in food/feed areas of food/feed handling establishments other than as a crack and crevice treatment is not permitted. Do not treat food preparation surfaces. Do not apply bait gel to areas which have been recently sprayed with insecticide, and do not spray insecticide over gel as it may cause the bait to become repellent.

**USDA:** Authorized by USDA for use in Federally inspected meat, poultry, and shell egg grading plants.  
**Approved F2:** Residual pesticide.

MAXFORCE Professional Insect Control Roach Killer Bait Gel is packaged in a plastic reservoir containing 30g (1.05 oz) of bait. Application rate is dependent on level of infestation and species to be controlled. Bait can be applied as spots or as a bead in cracks and crevices. The lower application rate should be used for low to moderate infestations or re-treatments and the higher rate for more severe infestations or where the population occurs in inaccessible areas, such as in walls. Gel placements should be at or near harborage or aggregation areas, such as corners, areas of movement or cracks and crevices. Numerous smaller placements will provide faster control than fewer larger spots, especially for German cockroach control.

SPECIES/LEVEL OF INFESTATION	APPLICATION RATE (PER SQ YD)
MODERATE INFESTATIONS OR TREATS FOR GERMAN OR BROWN-BANDED ROACHES:	1-2 SPOTS ABOUT THE SIZE OF THE GEL SYRINGE CAP OR 1 1/2"-3" BEAD
SEVERE OR HEAVY INFESTATIONS FOR GERMAN OR BROWN-BANDED ROACHES	2-4 SPOTS ABOUT THE SIZE OF THE GEL SYRINGE CAP OR 3"-6" BEAD
LARGE ROACHES SUCH AS AMERICAN, SMOKEY-BROWN OR ORIENTAL	(Actual size syringe cap) RECOMMENDED SPOT SIZE (1/4 - 1/2 g)

For outdoor use: Place in areas adjacent to structures where roaches may rest or breed. Apply bait to potential points of insect entry, such as eaves, sills, and expansion joints. Apply bait in protected areas whenever possible. Environmental stresses such as direct sunlight and water will reduce the residual effectiveness. Priority treatment areas may be identified by visual inspection of such areas listed above or aided by trapping techniques or spot flushing.

**REFILLABLE STATIONS:** Maxforce Roach Killer Bait Gel may be placed into refillable bait stations designed for interior or exterior/perimeter use; when placing bait in the station, do not exceed the capacity of the station's reservoir. Close bait station securely after application. During follow up visits inspect placements and reapply as needed.

**Directions for loading reservoirs and operation:** On the handle of the drive rod, point the arrow facing up. Pull the drive rod as far as it will go. Attach a pre-filled reservoir of MAXFORCE Professional Insect Control Roach Killer Bait Gel to the Bait injector with a twist-locking movement. Remove the reservoir outlet cap and attach the dispensing tip. Push the drive rod until the drive plunger seats against the piston in the reservoir of gel. Turn drive rod knob until teeth are facing down and engaging trigger mechanism (arrow down). Gently squeeze the trigger until the gel flows out. The bait will adhere to non-greasy or non-dusty surfaces and will remain pliable and palatable to cockroaches as long as it is visibly present. Reapply when bait is no longer visibly present according to the remaining level of infestation, which is generally at a lower rate than the initial treatment. A visual inspection of bait placement is recommended at one month after the initial treatment. Reapplication should occur if the bait is visibly depleted. Do not use this product in or on electrical equipment where a possibility of shock hazard exists.

**Directions for changing reservoirs:** With the arrow on the drive rod pointing up, pull the drive rod out as far as it will go. Remove the empty reservoir, wrap, and place in trash can. Reservoirs that still contain gel can be sealed with the end cap and outlet cap for future use. To attach a new reservoir follow the above directions.

Pest population reduction will be apparent within a week or less.

### STORAGE AND DISPOSAL

Do not contaminate water, food or feed by storage or disposal.

**PESTICIDE STORAGE:** Store in original container in a cool, dry area out of reach of children. Keep container closed when not in use. Avoid contamination with other insecticides.

**DISPOSAL:** If empty: Do not reuse this container. Place in trash or offer for recycling if available. If partly filled: Call your local solid waste agency for disposal instructions. Never place unused products down any indoor or outdoor drain.

### **IMPORTANT: READ BEFORE USE**

Read the entire Directions for Use, Conditions, Disclaimer of Warranties and Limitations of Liability before using this product. If terms are not acceptable, return the unopened product container at once.

By using this product, user or buyer accepts the following Conditions, Disclaimer of Warranties and Limitations of Liability.

**CONDITIONS:** The directions for use of this product are believed to be adequate and must be followed carefully. However, it is impossible to eliminate all risks associated with the use of this product. Crop injury, ineffectiveness or other unintended consequences may result because of such factors as weather conditions, presence of other materials, or the manner of use or application, all of which are beyond the control of Bayer CropScience LP. All such risks shall be assumed by the user or buyer.

**DISCLAIMER OF WARRANTIES:** TO THE EXTENT CONSISTENT WITH APPLICABLE LAW, BAYER CROPSCIENCE LP MAKES NO OTHER WARRANTIES, EXPRESS OR IMPLIED, OF MERCHANTABILITY OR OF FITNESS FOR A PARTICULAR PURPOSE OR OTHERWISE, THAT EXTEND BEYOND THE STATEMENTS MADE ON THIS LABEL. No agent of Bayer CropScience LP is authorized to make any warranties beyond those contained herein or to modify the warranties contained herein. TO THE EXTENT CONSISTENT WITH APPLICABLE LAW, BAYER CROPSCIENCE LP DISCLAIMS ANY LIABILITY WHATSOEVER FOR

SPECIAL, INCIDENTAL OR CONSEQUENTIAL DAMAGES RESULTING FROM THE USE OR HANDLING OF THIS PRODUCT.

**LIMITATIONS OF LIABILITY:** TO THE EXTENT CONSISTENT WITH APPLICABLE LAW, THE EXCLUSIVE REMEDY OF THE USER OR BUYER FOR ANY AND ALL LOSSES, INJURIES OR DAMAGES RESULTING FROM THE USE OR HANDLING OF THIS PRODUCT, WHETHER IN CONTRACT, WARRANTY, TORT, NEGLIGENCE, STRICT LIABILITY OR OTHERWISE, SHALL NOT EXCEED THE PURCHASE PRICE PAID, OR AT BAYER CROPSCIENCE LP'S ELECTION, THE REPLACEMENT OF PRODUCT.

Bayer (reg'd), the Bayer Cross (reg'd), Maxforce® and Domino Effect® are registered trademarks of Bayer.



Produced for:

**Bayer Environmental Science**

A Division of Bayer CropScience LP  
2 T. W. Alexander Drive  
Research Triangle Park, NC 27709



**Maxforce<sup>®</sup>**

**PROFESSIONAL INSECT CONTROL  
Roach Killer Bait Gel**

3.375"

2.875"

**KEEP OUT OF  
REACH OF  
CHILDREN**



FOR USE IN COMMERCIAL, INDUSTRIAL AND RESIDENTIAL AREAS. USE ONLY IN AREAS NOT EASILY ACCESSIBLE TO CHILDREN AND PETS.

**PRECAUTIONARY STATEMENTS HAZARDS TO HUMANS AND DOMESTIC ANIMALS**

**CAUTION:** Harmful if swallowed or absorbed through skin. Causes moderate eye irritation. Avoid contact with eyes, skin or clothing. Keep exposed gel away from open foods and food contact surfaces.

**FIRST AID:** If on skin: Take off contaminated clothing. Rinse skin immediately with plenty of water for 15-20 minutes. Call a poison control center or doctor for treatment advice. Have the product container or label with you when calling a poison control center or doctor or going for treatment. You may also contact 1-800-334-7577 for emergency.

**STORAGE AND DISPOSAL:** Do not contaminate water, food or feed by storage or disposal. **STORAGE:** Store in a cool, dry area. **DISPOSAL:** If empty: Do not reuse this container. Place in trash or offer for recycling if available. If partly filled: Call your local solid waste agency for disposal instructions, never place unused products down any indoor or outdoor drain.

**Net Weight: 30g (1.05 Oz)**  
79671172 80182171A 090429AV2



**Maxforce®**

**PROFESSIONAL INSECT CONTROL  
Roach Killer Bait Gel**

**ACTIVE INGREDIENT:** Hydramethylnon† ..... 2.15%  
**OTHER INGREDIENTS:** ..... 97.85%  
**TOTAL** ..... 100.00%

†CAS NO. 67485-29-4

**EPA Reg. No. 432-1254**      **EPA Est. No. 071106-GA-003**

**REFER TO OUTER BOX FOR COMPLETE DIRECTIONS FOR USE**

Product may stain textiles and clothing.  
Product will stain porous surfaces.



Produced for:

**Bayer Environmental Science**

A Division of Bayer CropScience LP  
2 T. W. Alexander Drive  
Research Triangle Park, NC 27709